



THE OBSERVER

June 27, 2022

Editor: Susan Rauch

Associate Editors: Micky Josephs

Ariana Caragliano

Contributing Editor: Irene Sax

From the Office of Academic Initiatives and Strategic Innovation

Dear Members,

Happy Summer!

We enjoyed seeing a few of you in person on June 23 at the tour of the Graduate Center campus. Thank you very much for your good questions and rich insights into the history of the LP² program. The following two campus tours are fully booked, but stay tuned for an announcement of August tour dates.

To help you get ready for the Fall, our office is currently following up with members who need a Cleared4 access pass. In addition to the Cleared4 access pass, everyone entering the campus will need a Graduate Center student photo ID. The easiest and fastest way to obtain your student photo ID is to request one via e-mail following the instructions below, under REMINDERS.

Finally, I encourage you to experience an exciting new exhibit currently on view in the Graduate Center's James Gallery (located on the first floor of the building). *The Songwriters Hall of Fame Songwriters Experience* celebrates the work and legacy of the Songwriters Hall of Fame and explores the mysteries behind the making of great music. Through graphic panels, artifact displays, and interactive experiences, the exhibition examines the songwriter's creative process, tells the stories of great songwriters — all of whom are members of the Songwriters Hall of Fame — and digs deep into the great compositional works that make up the American music treasury.

The exhibit was curated by the Los Angeles-based GRAMMY Museum and co-sponsored by our office – the [Office of Academic Initiatives and Strategic Innovation](#) at the Graduate Center. More information and visiting

hours are available on our [website](#)

Special Announcement: We're happy to share the news that the LP² Program Director, Mariel Villeré and her husband Alexander Bender have welcomed their son Levi Elia Bender this past Saturday. The entire family is doing well.

Joanna
engagement@gc.cuny.edu
212-817-247

GC Virtual Info Desk:

GC Virtual Info Desk appointments are fully booked through the end of June. You can use the [sign-up form](#) to let us know your questions, and we will be back in touch to schedule appointments in July.

GC Campus Tours

- **June and July GC Campus tours are fully booked** We will release August tour dates by mid-July.
 - If you're coordinating a Fall 22 study group, please contact your Curriculum Committee liaison to learn more about the coordinator-specific campus tours later this summer.
 - If you're a new member, you should have received information about your campus tour date from your mentor and the Orientation Committee.
-

WHAT'S NEW?

NEW Break Activity

Crime and Punishment with Steve Kalinsky (Zoom)

Wednesdays from 2:30 – 4:00PM

July 13, 20, 27, August 3, 10, 17

Many of us have been watching the recent hearings in Washington where some of the operative words have been "crime" and "punishment". With that in mind, Steve will be hosting a book group reading and discussing "CRIME AND PUNISHMENT" by Fyodor Dostoevsky. We will be using the Richard Pavear and Larissa Volokhonsky translation, published by Vintage Classics (1993). The book is available in paperback and on Kindle. All LP² members are welcome to participate.

Contact Steve at skalinsky@gc.cuny.edu for a Zoom invite.

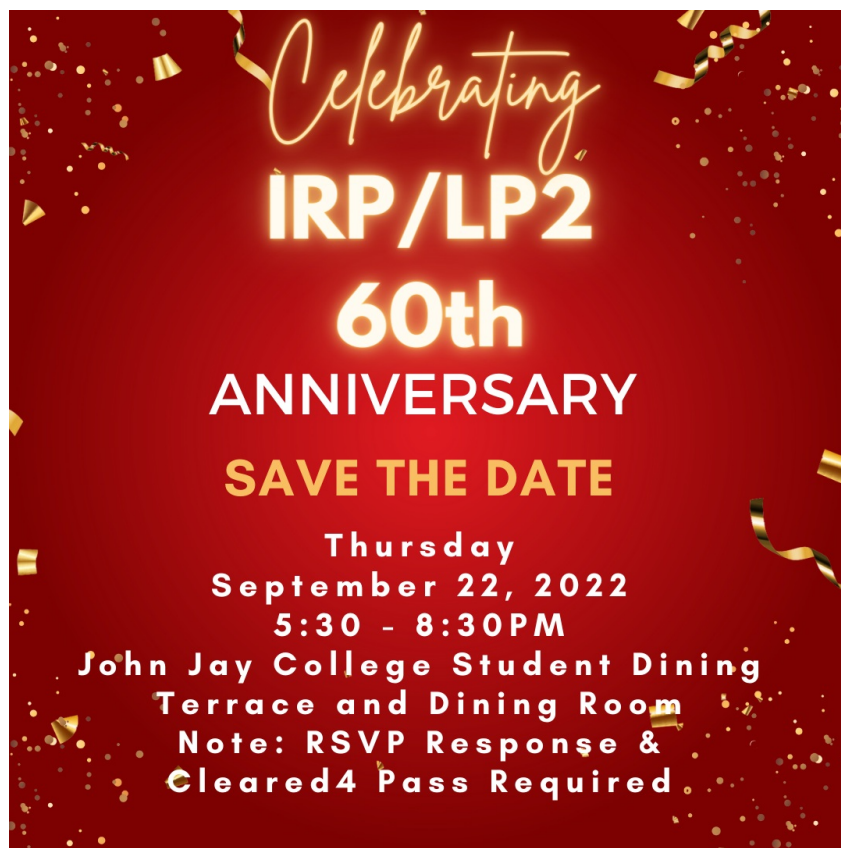
They Let it Rain

Despite the rain, stalwart

LP² members Jan Adler, Jay Fleishman, Michael Shapiro, Mark Scher, Dan Marcus, Barry Cooper and Harold Berkowitz met in Bryant Park to discuss their book choice and enjoy a beer.



REMINDERS



Break Activities

Poetry and Bites

with Terry Hamilton and Susan & Ron Forlenza (LIVE!)

Tuesday, July 12 at 1:00 - 3:30PM,

Join this gathering of up to twelve people in a Harlem brownstone backyard (inside if it rains) for an afternoon of poetry and a lite lunch, wine and lemonade.

Guests need only bring from one to three short poems they like and a brief background of the poet. Any poetry style is fine and can include poets who live or lived in Harlem. Each participant will get a few minutes to lead the

discussion of what the poem means. Terry, Susan and Ron will mind the time and keep the discussion flowing. One flight of steps to the parlor floor and one flight of steps to the backyard. Also bring socks; it's a shoes-off apartment.

RSVP to Terry Hamilton at thamilton@gc.cuny.edu. Limited to the first 12 people who sign up only. Terry will email guests the address and transportation details.

Stories Aloud with Sharon Girard (Zoom)
Mondays @ 3:00 to 4:30PM
July 18, August 1, 15, and 29

Please email Sharon at sgirard@gc.cuny.edu for the Zoom link; also, indicate if you would like to be a reader.

Call for Break Activities between Semesters

The Community Building Initiative seeks volunteers to lead activities during the break from July 12 - August 31.

To propose your activity, contact Jane Case Einbender at jeinbender@gc.cuny.edu.

Get Your Student IDs and Cleared4 Passes Now:

Watch Your email for Cleared4 Instructions. To access campus, you must be fully vaccinated and have a Cleared4 pass for validation. In anticipation of many live study groups during the Fall semester, we are sending Cleared4 instructions via email to those who need to register.

To request your Graduate Center student photo ID card:

- Email security@gc.cuny.edu from your Graduate Center email address. Put "ID Card" in the subject line.
- Include your name, your program (LP²) and your mailing address in the email body.
- Attach a "passport type headshot" JPEG picture taken within the past six months.

Calling All Painters, Sculptors, Photographers, Block Printers, Ceramicists and Textile Artists!

Display the creative work you have been doing this summer in the Online Art Show. Send a photograph of your work with a title and a brief statement about it to Carol Millsom at cmillsom@gc.cuny.edu. Art works appear in The Observer in the order in which they are received.

MISSING LINKS DIRECTORY

[Graduate Center Password Reset](#)

[GC Portal](#)
[LP² Library Contact \(Mason Brown\)](#)
[Free Access – CUNY ARTS](#)

[LP² Member Website](#)

- [Member Directory](#)
- [Faces](#)
- [Library and Online Resource page](#)
- [LP² and GC Help](#)
- [Tech Help](#)

Linkedin Learning (formerly known as Lynda)

- [LinkedIn learning at NYPL](#) and [Get a NYPL Library Card](#)
- [LinkedIn Learning at BPL](#) and [Get a BPL Library Card](#)
- [LinkedIn Learning at QPL](#) and [Get a QPL Library Card](#)

What links would you like to see included? You don't have to know the actual link, just what you'd like to be able to link to without cleaning out your desk to find the paper you wrote it down on.

Send your requests and suggestions to Micky Josephs at mjosephs@gc.cuny.edu or Susan Rauch at srauch@gc.cuny.edu.

[Current GC Campus Covid Rules](#)

ONGOING LP² EVENTS

The Women's Group meets at 3:45PM on Thursdays. Contact Arlyne LeSchack at aleschack@gc.cuny.edu.

The Men's Group meets at 3:45PM on Wednesdays. Contact Jay Fleishman at efleishman@gc.cuny.edu.

Stitch Away Stress meets at 4PM Tuesdays. Members share skills and enjoy the meditative benefits of handwork. Contact Michelle Harris at mharris@gc.cuny.edu.

Schedule for submitting articles for The Observer and Website - New DEADLINE DATE

Members wishing to submit information for publication in The Observer or listing on the Website have a **new deadline: the Wednesday before the Monday publication date**. In addition, we urge you to send us your material as early as possible so that it can be entered onto the LP²calendar, which is managed by the Graduate Center. If you have an event to publicize, please notify Micky Joseph at mjosephs@gc.cuny.edu at **least one month in advance** to ensure that the event receives maximum publicity.

Member Forum Submissions: (starting September 2022) If you have something to share with the LP² community, e.g., a photo, an article, a book or a web site that you've discovered and think would be interesting to members, send it to Micky Josephs at mjosephs@gc.cuny.edu for inclusion in the Member Forum.