

THE OBSERVER
July 18, 2022

Editor: Susan Rauch

Associate Editors: Micky Josephs
Ariana Caragliano
Contributing Editor: Irene Sax

From the Office of Academic Initiatives and Strategic Innovation

Dear Members,

Our program will experience its first mostly-in-person semester at the Graduate Center while facing the continued uncertainty caused by the Covid-19 pandemic. As the Advisory Board, Co-Chairs of the Curriculum Committee, and program administrators we continue to plan for a fall term that will be marked by transitions and pivots. Next week, CUNY will release its Academic Year 2022-2023 Safety Guidance outlining university-wide mandates and regulations guiding public health measures on CUNY campuses. We will share that information with you as soon as it becomes available.

Developing a Study Group grid is never an easy task and the original Fall 2022 grid was no exception to the rule. The Grid is a result of hundreds of hours of work and reflects the many conflicting challenges, constraints and considerations including:

- coordinator modality preferences
- coordinator day and time preferences
- the fact that study groups beginning before 10:00am in the morning are unpopular
- competition for classroom space in the afternoons by other Graduate Center programs
- the desire to avoid pitting four or more study groups against each other
- factoring in travel time to allow LP2 members to get home from the Graduate Center

Responding to preliminary registration results and additional Zoom/HyFlex study groups

Preliminary registration data showed that a great majority of members (92%)

are planning to attend at least some in-person classes. **67%** of members chose a combination of in-person and Zoom study groups; **25%** of members registered for in-person SGs ONLY, with **8%** choosing Zoom only.

Although the vast majority of members are ready to attend study groups at the Graduate Center, the Advisory Board voted to add a limited number of Zoom study groups to the grid to accommodate members who are unable to attend in-person classes.

We are happy to report that three new study groups have been added to the grid. All members are eligible to add the new study groups in the Add/Drop period. The new study groups are:

- *Korean - The Forgotten War* with John Becker on Zoom - Monday, 2:15PM - 3:45PM. (Duplicate of Wednesday in-person at 11:45AM).
- *Art of Narration - Hebrew Bible & N.T.* with Betsy Gitter on Zoom - Tuesday, 2:15PM - 3:45PM. (Duplicate of Thursday in-person at 11:45AM).
- *South American Films III* with Harold Berkowitz and Ted Dreyfus on HyFlex - Monday, 11:45AM - 1:15PM. Six Weeks, second half of semester. (Updated version of a previous 12-week study group).

With the addition of the three new study groups, we are offering a record 39 study groups this fall:

- Zoom: 12 (31%)
- HyFlex: 2 (5%)
- In-person: 25 (64%)

We thank the many coordinators who have volunteered to lead study groups during this transitional semester. Special thanks to John Becker, Betsy Gitter, Harold Berkowitz and Ted Dreyfus who will be coordinating the added SGs.

The updated grid will be posted on LP2nyc.org this week. Your study group assignments and rosters will be distributed this week as well, along with a link to the Add/Drop form.

We wish you a healthy and successful fall semester.

Ruth Mackaman, Curriculum Committee Chair
Randy Ross, Curriculum Committee Co-Chair
Barbara Marwell, LP² Advisory Board Chair
Joanna Micek, Program Manager for LP²

GC Campus Tours

Get ready to attend study groups in person with a tour of the Graduate Center campus. The tour will include a preview of classrooms and public spaces in the building and a Q&A session addressing the nitty-gritty of campus access: student ID cards, Graduate



Center email accounts, Covid policies and using the library. All tours will be capped at 12 attendees

Two new campus tour dates have been added. Please click through to the form to register.

- Wednesday, August 3 - 2:00 to 4:00PM
- Thursday, August 11 – 10:00AM to Noon

Register for campus tours using this [form](#).

GC Virtual Info Desk:

GC Virtual Info Desk appointments are fully booked through the end of July. You can use the [sign-up form](#) to let us know your questions, and we will be back in touch schedule appointments.

GC Virtual Info Desk:

We also have new dates and hours for the GC Virtual Info Desk, please click through to the form to sign up for an appointment. Joanna and Monben will be available to answer your questions about:

- Cleared4 passes;
- CUNY ID cards;
- Graduate Center email access;
- The library and visiting the GC campus.

Sign up for an appointment using [this form](#).

WHAT'S NEW?

This Week

- Study group schedules and rosters distributed
- Enhanced Fall Grid available on LP2nyc.org (website) and sent via email to the entire membership
- Add/Drop Period opens

Friday, July 29 - Add/Drop Period closes

Pour at 4 Outdoors

Pour @ four

Thursday, July 21 @ 4:00PM

Location: Central Park; enter at 5
Avenue and 72 Street

Location: Central Park: enter at 5 Avenue and 72 Street

Meet at: Kerbs Boathouse/Conservatory Water (Model Boat Pond)

Directions: *First right upon entering the park. Follow the path to the patio facing the pond.*

**Hosts: Susan Winston
Susan Rubens**

Transportation:

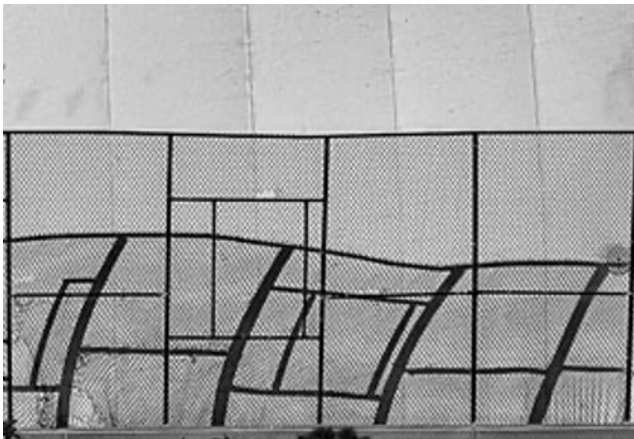
***Subway: N, R, W, 6.**

***Bus: M1, M2**

Questions or concerns:

Contact Susan R. at srubens@gc.cuny.edu

If it rains, the “Pour” is canceled. There is no rain date.



Organizing Space Through a Lens

In six whirlwind weeks, this summer's *Organizing Space* study group explored shape, negative space, point of view, eye direction, and rhythm in photography, producing some wonderful examples of their own! This selection was curated by coordinator Barbara Confino

from images submitted by members on the last day of class.

Click on [this link](#) to see the results!

REMINDERS

Break Activities

Stories Aloud with Sharon Girard (Zoom)

Mondays @ 3:00 to 4:30PM

July 18, August 1, 15, and 29

Please email Sharon at sgirard@gc.cuny.edu for the Zoom link; also, indicate if you would like to be a reader.

The Great LP² Read

***Mr. Penumbra's 24-Hour Bookstore* by Robin Sloan**

Thursday, August 25 at 2:00PM

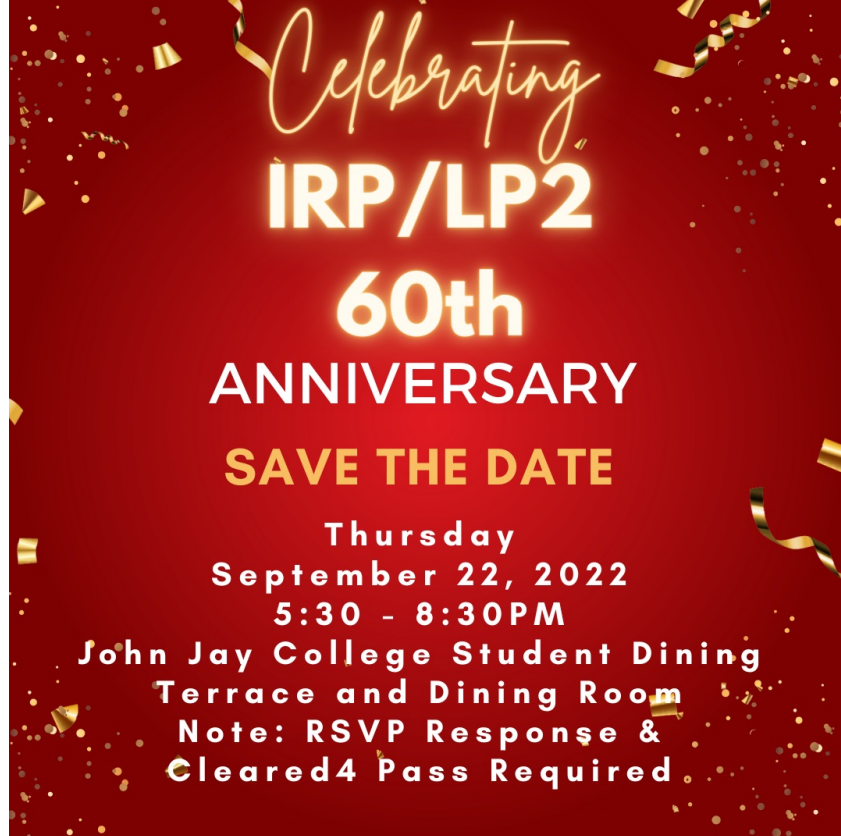
Join with your colleagues for our fifth Great LP² Read with a novel that tackles the intersection between old technologies and new as well as a quest for the secret to eternal life: part love letter to books; part technological meditation; part thrilling adventure; part requiem; mostly set in a hole-in-the-wall San Francisco bookstore.

To participate, email Jane Case Einbender at jeinbender@gc.cuny.edu obtain the book and read it on your own. You'll receive a Zoom invite before the session.

Call for Break Activities between Semesters

The Community Building Initiative seeks volunteers to lead activities during the break from July 12 - August 31.

To propose your activity, contact Jane Case Einbender at jeinbender@gc.cuny.edu.



Get Your Student IDs and Cleared4 Passes Now:

Watch Your email for Cleared4 Instructions. To access campus, you must be fully vaccinated and have a Cleared4 pass for validation. In anticipation of many live study groups during the Fall semester, we are sending Cleared4 instructions via email to those who need to register.

To request your Graduate Center student photo ID card:

- Email security@gc.cuny.edu from your Graduate Center email address. Put "ID Card" in the subject line.
- Include your name, your program (LP²) and your mailing address in the email body.
- Attach a "passport type headshot" JPEG picture taken within the past six months.

Calling All Painters, Sculptors, Photographers, Block Printers, Ceramicists and Textile Artists!

Display the creative work you have been doing this summer in the Online Art Show. Send a photograph of your work with a title and a brief statement about it to Carol Millsom at cmillsom@gc.cuny.edu. Art works appear in The Observer in the order in which they are received.

MISSING LINKS DIRECTORY

[Graduate Center Password Reset](#)

[GC Portal](#)

[LP² Library Contact \(Mason Brown\)](#)

[Free Access – CUNY ARTS](#)

[LP² Member Website](#)

- [Member Directory](#)
- [Faces](#)
- [Library and Online Resource page](#)
- [LP² and GC Help](#)
- [Tech Help](#)

Linkedin Learning (formerly known as Lynda)

- [LinkedIn learning at NYPL](#) and [Get a NYPL Library Card](#)
- [LinkedIn Learning at BPL](#) and [Get a BPL Library Card](#)
- [LinkedIn Learning at QPL](#) and [Get a QPL Library Card](#)

What links would you like to see included? You don't have to know the actual link, just what you'd like to be able to link to without cleaning out your desk to find the paper you wrote it down on.

Send your requests and suggestions to Micky Josephs at mjosephs@gc.cuny.edu or Susan Rauch at srauch@gc.cuny.edu.

[Current GC Campus Covid Rules](#)

ONGOING LP² EVENTS

The Women's Group meets at 3:45PM on Thursdays. Contact Arlyne LeSchack at aleschack@gc.cuny.edu.

The Men's Group meets at 3:45PM on Wednesdays. Contact Jay Fleishman at efleishman@gc.cuny.edu.

Stitch Away Stress meets at 4PM Tuesdays. Members share skills and enjoy the meditative benefits of handwork. Contact Michelle Harris at mharris@gc.cuny.edu.

Schedule for submitting articles for The Observer and Website - New DEADLINE DATE

Members wishing to submit information for publication in The Observer or listing on the Website have a **new deadline: the Wednesday before the Monday publication date**. In addition, we urge you to send us your material as early as possible so that it can be entered onto the LP²calendar, which is managed by the Graduate Center. If you have an event to publicize, please notify Micky Joseph at mjosephs@gc.cuny.edu at **least one month in advance** to ensure

that the event receives maximum publicity.

Member Forum Submissions: (starting September 2022) If you have something to share with the LP² community, e.g., a photo, an article, a book or a web site that you've discovered and think would be interesting to members, send it to Micky Josephs at mjosephs@gc.cuny.edu for inclusion in the Member Forum.