

THE OBSERVER
July 25, 2022

Editor: Susan Rauch

Associate Editors: Micky Josephs
Ariana Caragliano
Contributing Editor: Irene Sax

From the Office of Academic Initiatives and Strategic Innovation

Dear Members,

Your Fall 2022 schedules were distributed last week. You may make changes to your schedules until Monday, August 1st by using the [ADD/DROP Form](#) and consulting the updated [Fall 2022 Study Group Grid](#). Please see below for answers to your most frequently asked questions on registration:

Q: “Why didn’t I get all of the study groups I registered for?”:

- A: We have provided members with their study groups per preferences listed on their registration forms and avoiding scheduling conflicts. A few study groups were filled by first preferences, and many second choices were placed by lottery and at capacity before all second choices were placed.
- For example, if you selected a popular study group for your second choice and did not get in, we defaulted to your third. If your third choice was open, you were placed there. However, many popular groups were closed after the second-choice placement, so we moved to the next choice listed on your form.

Q: “I am under 2 study groups, what do I do?”

- A: You may have been assigned only 1 or 1.5 study groups due to the following factors: not having listed enough choices, the study groups you chose were closed or were on a conflicting day/time with preferred groups you were placed in. Therefore, if you have 1 or 1.5 study groups assigned to you (**where 1=a 12-week study group and 0.5=a 6-week study group**), and do not have prior permission from our office, you need to add a study group using the [ADD/DROP form](#) linked above to meet the 2 study group minimum for LP2 membership. We will contact you if you are still under-registered at the end of the first add/drop period.

Q: What is a free fourth study group?

- A: If you are already registered for 3 or 3.5 study groups and are interested in doing more, please add one of the “free fourth” study groups listed on the [ADD/DROP](#) form.

Joanna
Program Manager for LP²
engagement@gc.cuny.edu



GC Campus Tours

Get ready to attend study groups in person with a tour of the Graduate Center campus. The tour will include a preview of classrooms and public spaces in the building and a Q&A session addressing the nitty-gritty of campus access: student ID cards, Graduate Center email accounts, Covid policies and using the library. All tours will be capped at 12 attendees

A new campus tour date is available. Please click on [form](#) to register.

- ~~Wednesday, August 3 – 2:00 to 4:00PM (FULL)~~
 - Thursday, August 11 – 10:00AM to Noon
-

GC Virtual Info Desk:

GC Virtual Info Desk appointments are fully booked through the end of July. You can use the [sign-up form](#) to let us know your questions, and we will be back in touch schedule appointments.

GC Virtual Info Desk:

We also have new dates and hours for the GC Virtual Info Desk, please click the [form](#) to sign up for an appointment. Joanna and Monben will be available to answer your questions about:

- Cleared4 passes;
- CUNY ID cards;
- Graduate Center email access;
- Library and visiting the GC campus.

To sign up for an appointment, click on [form](#).

Sign up for an appointment using [this form](#).

WHAT'S NEW?

This Week

ADD/DROP Period is open.

Monday, August 1

ADD/DROP Period closes.



**Visit to DIA Beacon and
the Hudson Valley
Friday, August 12
Meet; Grand Central
Station
Time: 9:43AM train to
Beacon**

Join us for a scenic trip up
the Hudson to view
contemporary art in a
converted box factory. See a
special exhibition at DIA

Beacon, Andy Warhol – Shadows, and its extensive collection of art since the 1960s.

Meet as a group at Grand Central to take Metro North 9:43 train to Beacon, NY. Arrive at 11:13 and walk a half mile to the museum or wait for the free loop bus. We will meet for lunch at the café at 12:30. Continue to visit the collection (the museum closed at 5:00) or take the loop bus from the museum to explore the town of Beacon and its historic buildings and art galleries. Perhaps stay in town for dinner. Return to the city whenever you like. There are two trains per hour between 4:00PM and 6:00PM; one per hour before and after those times.

Admission: \$18. If you get your ticket online and use the code MTAAWAY, you will receive a 10% discount on admission.

Train fare to and from Beacon: \$35 off peak. Tickets may be purchased online or at the station

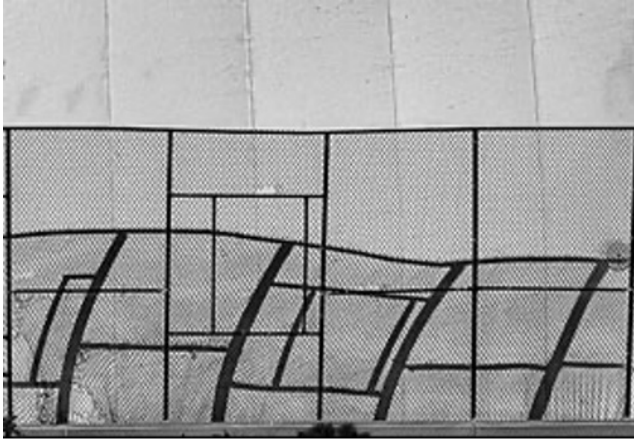
For more information on DIA: <https://www.diaart.org/visit/visit-our-locations-sites/dia-beacon-beacon-united-states>

For more information on Beacon: <https://www.planetware.com/new-york/top-rated-things-to-do-in-beacon-us-ny-104.htm>

To let us know you are coming: email Dick at dkossoff@lp2nyc.org

Organizing Space Through a Lens

In six whirlwind weeks, this summer's *Organizing Space* study group explored shape,



negative space, point of view, eye direction, and rhythm in photography, producing some wonderful examples of their own! This selection was curated by coordinator Barbara Confino from images submitted by members on the last day of class.

Note: Last week, the images were inadvertently published

without attribution. In this update, all photographers are properly credited.

[Click here](#) to see the results!

REMINDERS

Break Activities

Stories Aloud with Sharon Girard (Zoom)

Mondays @ 3:00 to 4:30PM

August 1, 15, and 29

Please email Sharon at sgirard@gc.cuny.edu for the Zoom link; also, indicate if you would like to be a reader.

The Great LP² Read

***Mr. Penumbra's 24-Hour Bookstore* by Robin Sloan**

Thursday, August 25 at 2:00PM

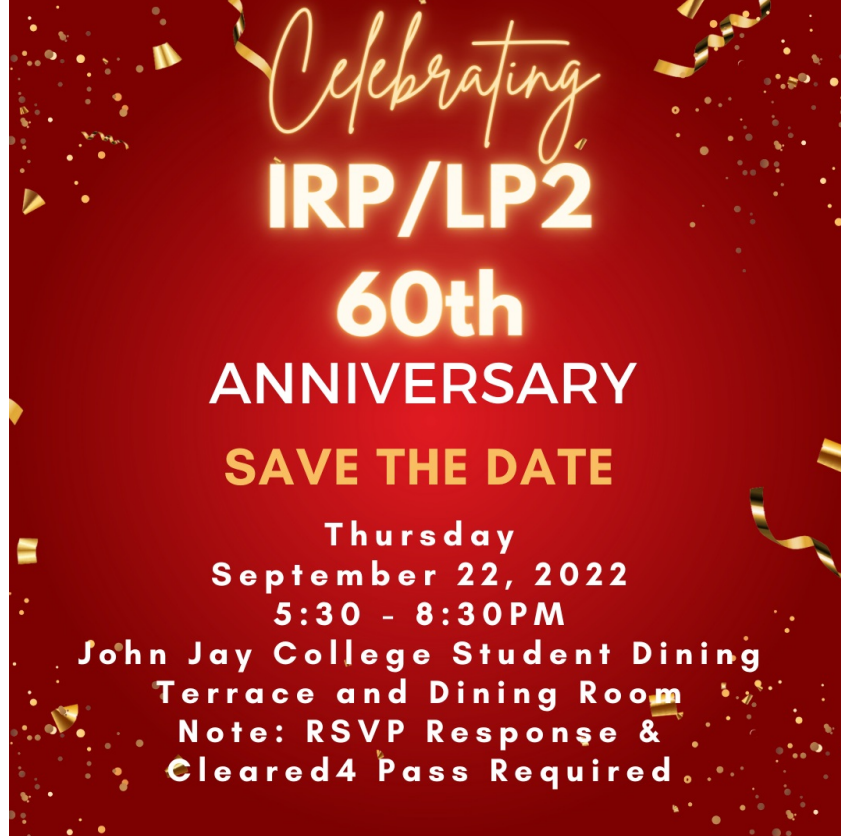
Join with your colleagues for our fifth Great LP² Read with a novel that tackles the intersection between old technologies and new as well as a quest for the secret to eternal life: part love letter to books; part technological meditation; part thrilling adventure; part requiem; mostly set in a hole-in-the-wall San Francisco bookstore.

To participate, email Jane Case Einbender at jeinbender@gc.cuny.edu obtain the book and read it on your own. You'll receive a Zoom invite before the session.

Call for Break Activities between Semesters

The Community Building Initiative seeks volunteers to lead activities during the break from July 12 - August 31.

To propose your activity, contact Jane Case Einbender at jeinbender@gc.cuny.edu.



Get Your Student IDs and Cleared4 Passes Now:

Watch Your email for Cleared4 Instructions. To access campus, you must be fully vaccinated and have a Cleared4 pass for validation. In anticipation of many live study groups during the Fall semester, we are sending Cleared4 instructions via email to those who need to register.

To request your Graduate Center student photo ID card:

- Email security@gc.cuny.edu from your Graduate Center email address. Put "ID Card" in the subject line.
- Include your name, your program (LP²) and your mailing address in the email body.
- Attach a "passport type headshot" JPEG picture taken within the past six months.

Calling All Painters, Sculptors, Photographers, Block Printers, Ceramicists and Textile Artists!

Display the creative work you have been doing this summer in the Online Art Show. Send a photograph of your work with a title and a brief statement about it to Carol Millsom at cmillsom@gc.cuny.edu. Art works appear in The Observer in the order in which they are received.

MISSING LINKS DIRECTORY

[Graduate Center Password Reset](#)

[GC Portal](#)

[LP² Library Contact \(Mason Brown\)](#)

[Free Access – CUNY ARTS](#)

[LP² Member Website](#)

- [Member Directory](#)
- [Faces](#)
- [Library and Online Resource page](#)
- [LP² and GC Help](#)
- [Tech Help](#)

Linkedin Learning (formerly known as Lynda)

- [LinkedIn learning at NYPL](#) and [Get a NYPL Library Card](#)
- [LinkedIn Learning at BPL](#) and [Get a BPL Library Card](#)
- [LinkedIn Learning at QPL](#) and [Get a QPL Library Card](#)

What links would you like to see included? You don't have to know the actual link, just what you'd like to be able to link to without cleaning out your desk to find the paper you wrote it down on.

Send your requests and suggestions to Micky Josephs at mjosephs@gc.cuny.edu or Susan Rauch at srauch@gc.cuny.edu.

[Current GC Campus Covid Rules](#)

ONGOING LP² EVENTS

The Women's Group meets at 3:45PM on Thursdays. Contact Arlyne LeSchack at aleschack@gc.cuny.edu.

The Men's Group meets at 3:45PM on Wednesdays. Contact Jay Fleishman at efleishman@gc.cuny.edu.

Stitch Away Stress meets at 4PM Tuesdays. Members share skills and enjoy the meditative benefits of handwork. Contact Michelle Harris at mharris@gc.cuny.edu.

Schedule for submitting articles for The Observer and Website - New DEADLINE DATE

Members wishing to submit information for publication in The Observer or listing on the Website have a **new deadline: the Wednesday before the Monday publication date**. In addition, we urge you to send us your material as early as possible so that it can be entered onto the LP²calendar, which is managed by the Graduate Center. If you have an event to publicize, please notify Micky Joseph at mjosephs@gc.cuny.edu at **least one month in advance** to ensure

that the event receives maximum publicity.

Member Forum Submissions: (starting September 2022) If you have something to share with the LP² community, e.g., a photo, an article, a book or a web site that you've discovered and think would be interesting to members, send it to Micky Josephs at mjosephs@gc.cuny.edu for inclusion in the Member Forum.