

**THE OBSERVER**  
**August 15, 2022**

Editor: Susan Rauch

Associate Editors: Micky Josephs  
Ariana Caragliano  
Contributing Editor: Irene Sax

**From the Office of Academic Initiatives and Strategic Innovation**

I have a few housekeeping items to share before The Observer takes a well-deserved summer break.

First, a reminder that we will have **another Add/Drop period** in late August and early September. The Add/Drop period will allow you to make additional changes to your study group schedules. The Period will open on Monday, August 29<sup>th</sup>, and all members will receive information and the link via email.

Second, we are launching a brand-new email address specifically for LP<sup>2</sup> members, this email address to help us better manage your email inquiries. Starting this week, please **email us at [lp2@gc.cuny.edu](mailto:lp2@gc.cuny.edu)** Rest assured that we will continue to monitor the [engagement@gc.cuny.edu](mailto:engagement@gc.cuny.edu) inbox for your emails throughout the fall.

Third, we will not be offering Virtual Info Desk appointments for the remainder of this month, but the Info Desk will return with a new schedule in mid-September. Please send your questions to [lp2@gc.cuny.edu](mailto:lp2@gc.cuny.edu)

Finally, please join us in bringing the First Desk to The Graduate Center and read on for more information on how to volunteer.

Joanna  
Program Manager for LP<sup>2</sup>  
[lp2@gc.cuny.edu](mailto:lp2@gc.cuny.edu)



Volunteers Working in the LP<sup>2</sup> Office will

- Answer questions in person and on the telephone
- Be a guide in the building and its classrooms
- Serve as a greeter or a host for new people
- Gather tips on of restaurants in the area
- Disseminate information on events, etc. that may occur in the neighborhood

JOIN US to help make the new First Desk a success. Reply to [engagement@gc.cuny.edu](mailto:engagement@gc.cuny.edu) and [agitelson@gc.cuny.cuny](mailto:agitelson@gc.cuny.cuny) to add your name to the list for the Information Session in late August

**Do You Know Someone Who Might be Interested in Joining LP<sup>2</sup>?**

**Send them the instructions below to register for the next Information Session.**

Register now for [LP<sup>2</sup> September 8 Information Session](#)

Join us at our Information Session to find out more about the [lifelong Peer Learning Program \(LP<sup>2</sup>\)](#) at The Graduate Center, CUNY and learn how to apply to become a member of our unique learning community for the Spring 2023 term.

Click on the [Register Now](#) button below and let us know if you can attend the LP<sup>2</sup> Information Session on September 8, 2022, from 2:00PM to 4:00PM, at the Graduate Center, 365 Fifth Avenue, New York, NY.

**Register Now**

---

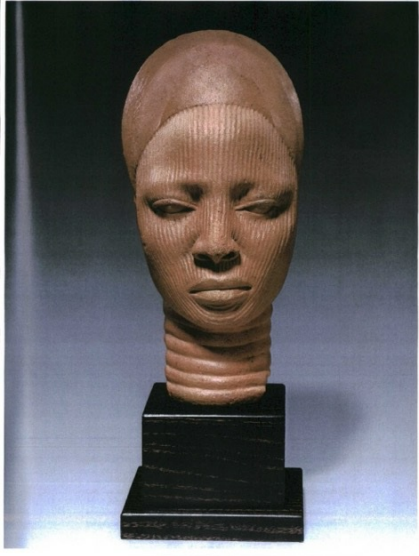
## **The Observer is Taking a Rest**

This week's Observer will be the last until Tuesday, September 6, the day after Labor Day, and one week before the start of the Fall semester. ENJOY THE REST OF THE SUMMER!!

---

## Break Activity

### An Introduction to West African Art and Culture with Moya Duffy Thursday, August 18 at 2:00PM (ZOOM)



Join Moya for a quick tour of aspects of precolonial West Africa, which influenced western modern art and artists like Picasso. She will draw on her experiences living in Liberia in the early '70s. Email Moya at [mduffy1@gc.cuny.edu](mailto:mduffy1@gc.cuny.edu) to sign up. You'll receive a Zoom link before the session.

---

### **PhotoSIG Tour at the International Center of Photography (ICP) and lunch at the Essex Street Market (WAITING LIST ONLY)**

**Thursday, September 1 at 11:45AM**

**Meet: ICP at 79 Essex Street (between Delancey and Broome Streets)**

**Telephone: (212) 857-0000**

**Website: <https://www.icp.org/>**

**Contact: Alec Rill at [arill@gc.cuny.edu](mailto:arill@gc.cuny.edu)**

---

### **The Great LP<sup>2</sup> Read**

***Mr. Penumbra's 24-Hour Bookstore* by Robin Sloan**

**Thursday, August 25 at 2:00PM**

To participate, email Jane Case Einbender at [jeinbender@gc.cuny.edu](mailto:jeinbender@gc.cuny.edu) obtain the book and read it on your own. You'll receive a Zoom invite before the session.

---

## **HIGHLIGHTS OF THE GRADUATE CENTER'S ACADEMIC YEAR 2022-23 COVID-19 INFORMATION AND SAFETY GUIDANCE**

### **LP<sup>2</sup> Vaccination Mandate Requirements**

LP<sup>2</sup> students taking in-person and hybrid classes must have up-to-date [COVID-19 vaccinations](#). Maintaining up-to-date COVID-19 vaccination status is the most important thing you can do to protect yourself and those with whom you interact at the Graduate Center.

Students of the Graduate Center are strongly encouraged to receive vaccine boosters once eligible. Please note the following guidelines for booster eligibility:

- Those 18 and older are eligible for a booster shot at 5 months after the completion of two-dose regimen of Pfizer, 5 months after the completion of a two-dose regimen of Moderna, or 2 months after the Johnson and Johnson (J&J) shot. The Pfizer or Moderna booster is preferred in most situations.

## Masking Recommendation

Currently, CUNY does not have a mask mandate. However, the Graduate Center strongly recommends that our community members wear a mask in crowded and public spaces to prevent the spread of COVID-19. People who are not vaccinated or over 65 and those at high risk of severe illness should also wear a mask in crowded outdoor spaces. At the Graduate Center, masks are available for our members and can be requested at the front desk and at the main desk in the library (first floor). LP<sup>2</sup> members will also be able to obtain KN95 masks in the Office of Academic Initiatives and Strategic Innovation (AISA) in Room 8309 (8<sup>th</sup> floor).

## Graduate Center Ventilation System

The Graduate Center's ventilation system and the system at the Advanced Science Research Center meet or exceed recommended requirements. Two independent engineering firms hired by CUNY to provide an environmental assessment of all buildings have certified that the Graduate Center building, 365 Fifth Avenue, and the residence hall at 118th Street are safe for reopening and in-person learning. They are classified as tier one buildings and rated as meeting relevant CDC recommendations for ventilation in schools and child care programs. We want to remind everyone at the Graduate Center that the air handling system at 365 Fifth Avenue is designed to operate most efficiently when windows are *closed*. Opening windows will diminish the filtration efficacy and efficiency. Please keep windows in your office or shared work area closed.

## REMINDERS

### **Calling All Painters, Sculptors, Photographers, Block Printers, Ceramicists and Textile Artists!**

Display the creative work you have been doing this summer in the Online Art Show. Send a photograph of your work with a title and a brief statement about it to Carol Millsom at [cmillsom@gc.cuny.edu](mailto:cmillsom@gc.cuny.edu). Art works appear in The Observer in the order in which they are received.

### **MISSING LINKS DIRECTORY**

- [Graduate Center Password Reset](#)
- [GC Portal](#)
- [LP<sup>2</sup> Library Contact \(Mason Brown\)](#)
- [Free Access – CUNY ARTS](#)

### [LP<sup>2</sup> Member Website](#)

- [Member Directory](#)
- [Faces](#)
- [Library and Online Resource page](#)
- [LP<sup>2</sup> and GC Help](#)
- [Tech Help](#)

Linkedin Learning (formerly known as Lynda)

- [LinkedIn learning at NYPL](#) and [Get a NYPL Library Card](#)
- [LinkedIn Learning at BPL](#) and [Get a BPL Library Card](#)
- [LinkedIn Learning at QPL](#) and [Get a QPL Library Card](#)

What links would you like to see included? You don't have to know the actual link, just what you'd like to be able to link to without cleaning out your desk to find the paper you wrote it down on.

Send your requests and suggestions to Micky Josephs at [mjosephs@gc.cuny.edu](mailto:mjosephs@gc.cuny.edu) or Susan Rauch at [srauch@gc.cuny.edu](mailto:srauch@gc.cuny.edu).

---

### [Current GC Campus Covid Rules](#)

---

## ONGOING LP<sup>2</sup> EVENTS

*The Women's Group meets at 3:45PM on Thursdays. Contact Arlyne LeSchack at [aleschack@gc.cuny.edu](mailto:aleschack@gc.cuny.edu).*

*The Men's Group meets at 3:45PM on Wednesdays. Contact Jay Fleishman at [efleishman@gc.cuny.edu](mailto:efleishman@gc.cuny.edu).*

*Stitch Away Stress meets at 4PM Tuesdays. Members share skills and enjoy the meditative benefits of handwork. Contact Michelle Harris at [mharris@gc.cuny.edu](mailto:mharris@gc.cuny.edu).*

---

### **Schedule for submitting articles for The Observer and Website - New DEADLINE DATE**

Members wishing to submit information for publication in The Observer or listing on the Website have a **new deadline: the Wednesday before the Monday publication date**. In addition, we urge you to send us your material as early as possible so that it can be entered onto the LP<sup>2</sup>calendar, which is managed by the Graduate Center. If you have an event to publicize, please notify Micky Joseph at [mjosephs@gc.cuny.edu](mailto:mjosephs@gc.cuny.edu) at **least one month in advance** to ensure that the event receives maximum publicity.

**Member Forum Submissions: (starting September 2022)** If you have something to share with the LP<sup>2</sup> community, e.g., a photo, an article, a book or a web site that you've discovered and think would be interesting

to members, send it to Micky Josephs at [mjosephs@gc.cuny.edu](mailto:mjosephs@gc.cuny.edu) for inclusion in the Member Forum.